

The Anatomy: Foundational Coaching Course

EMPOWER YOUR TEACHING THROUGH COACHING



This was by far the most effective and meaningful development workshop I have ever taken — professionally and personally.

Anatomy Participant

Learn how to use coaching in education with coaching models and tools specifically designed for educators. *The Anatomy* will ignite new ways of being, communicating and leading.

This course is experiential and practical, based on research and expertise. You will walk away with coaching skills you can apply immediately in your day-to-day professional and personal life.

Learn how to use coaching in education with coaching models and tools specifically designed for educators. *The Anatomy* will ignite new ways of being, communicating and leading.

WHAT IS COACHING?

Coaching is a way to empower individuals or groups to improve their own performance. In the world of entrepreneurial start ups, Fortune 500 companies and high-performance athletes, coaching is a critical tool for achieving excellence. Educators are now stepping into the coaching arena and adopting this evidence-based approach to higher achievement.

Over 90% of participants say *The Anatomy* provided tools and techniques relevant to both their jobs as educators and to their personal lives.

94% of participants would recommend *The Anatomy* to others.

YOU'LL LEARN TO



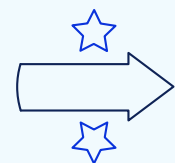
Foster more collaborative and authentic relationships



Lead others to reach their potential



Be an agile and creative problem solver



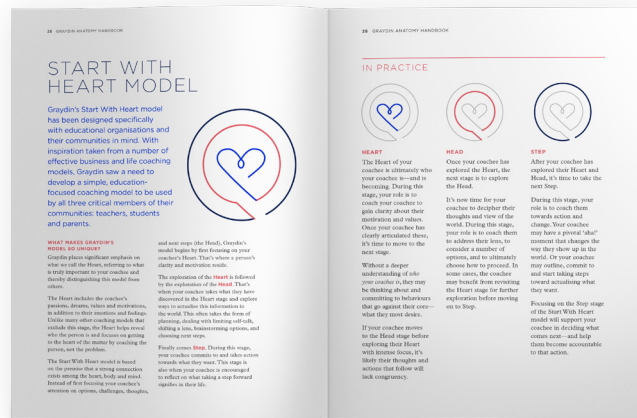
Guide growth and sustain change in your classroom and school



The Details

FACILITATION

In-person facilitation is experiential and practical, based on industry research and coaching expertise.

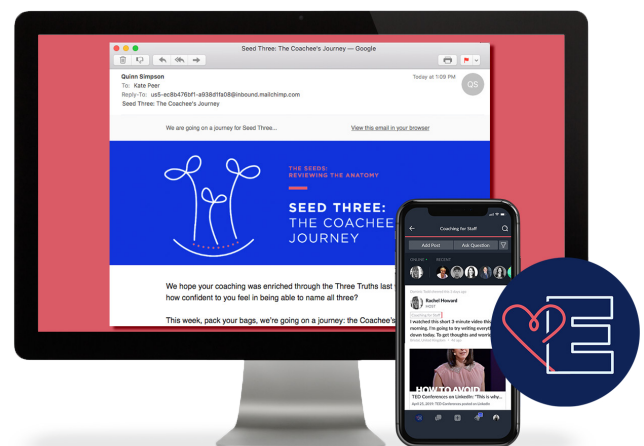


RESOURCES

A worksheet pack supports your learning during the course, and a handbook provides a comprehensive resource afterwards.

POST-COURSE SUPPORT

Following the course, coaching will be kept top-of-mind with our 10-week email course, The Seeds. You'll also gain access to exclusive online communities where you can connect with fellow participants and educators around the world.



To learn more about bringing coaching into your school, contact us at office@graydin.com or visit our website at graydin.com

The Journey: Advanced Coaching Course

CONTINUE YOUR INSPIRATIONAL COACHING JOURNEY

The Journey has really cemented earlier learning. It has been enjoyable and has felt incredibly useful.

Journey Participant

Become a more effective coach and educator with additional tools and strategies to apply with students, colleagues, family members and yourself. Throughout *The Journey*, you'll explore strategies for embedding a sustainable coaching culture at your school.

This course is experiential and practical, based on industry research and expertise. You will walk away with additional coaching skills you can apply immediately in your day-to-day professional and personal life.

You should attend *The Journey* if you want to become a more confident and competent coach, embed coaching in all areas of your life and empower yourself to step into new roles.

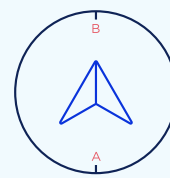
WHAT IS COACHING?

Coaching is a way to empower individuals or groups to improve their own performance. In the world of entrepreneurial start ups, Fortune 500 companies and high-performance athletes, coaching is a critical tool for achieving excellence. Educators are now stepping into the coaching arena and adopting this evidence-based approach to higher achievement.

99% of participants say they would recommend *The Journey* to others.

96% of participants say that after attending *The Journey*, they have more skills and tools available to use as a coach.

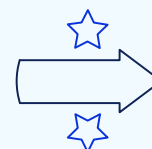
YOU'LL LEARN TO



Cement earlier learning on being, communicating and leading



Empower yourself to advance in new roles

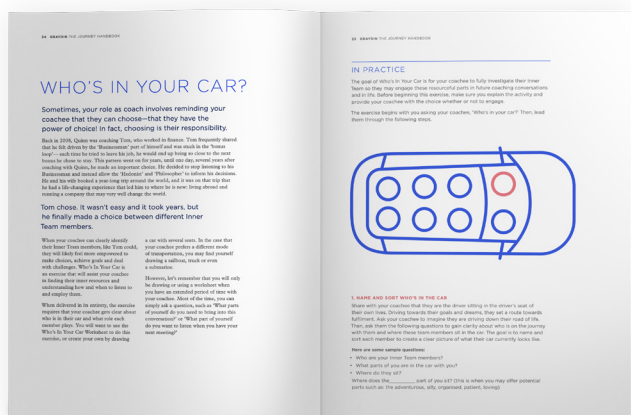


Become a strategic leader in sustaining change at your school

The Details

FACILITATION

In-person facilitation is experiential and practical, based on industry research and coaching expertise.



RESOURCES

A worksheet pack supports your learning during the course, and a handbook provides a comprehensive resource afterwards.

POST-COURSE SUPPORT

Following the course, you'll have the opportunity to receive one-to-one coaching sessions delivered by a Graydin Coach. You'll experience and embed the your new tools while working towards personal and professional goals. Your access to our online communities will expand.



To learn more about bringing coaching into your school, contact us at office@graydin.com or visit our website at graydin.com

The Art: Facilitating as Coach

EMBED COACHING IN YOUR SCHOOL



**I felt empowered by the end.
I felt believed in.**

Art Participant

With time to practice and receive feedback, you'll leave the two-day course with sharpened coaching skills, ready to facilitate *The Anatomy* to colleagues, students and parents.

This course is experiential and practical, based on research and expertise. You will walk away with advanced coaching and facilitation skills you can apply immediately in your day-to-day professional and personal life.

You should attend *The Art* if you are interested in advancing your coaching skills, delivering coaching training and becoming a driving force to embed coaching in your school.

WHAT IS COACHING?

Coaching is a way to empower individuals or groups to improve their own performance. In the world of entrepreneurial start ups, Fortune 500 companies and high-performance athletes, coaching is a critical tool for achieving excellence. Educators are now stepping into the coaching arena and adopting this evidence-based approach to higher achievement.

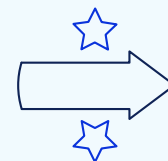
Over 90% of participants agreed the tools and techniques reviewed in *The Art* are valuable to the classroom environment.

100% of participants agreed they are now better at facilitating learning in others.

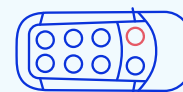
YOU'LL LEARN TO



Promote self-exploration and facilitate learning in others



Practice skills and strategies for facilitation

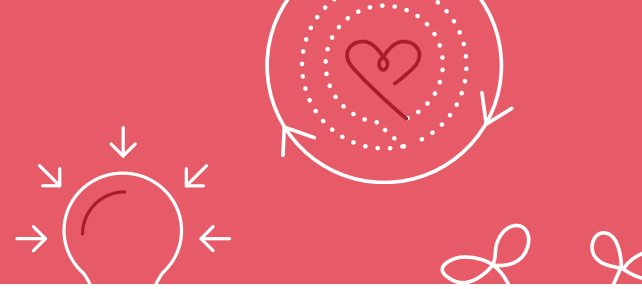


Build your capacity to deliver coaching training



Become a strategic leader in sustaining coaching at your school

The Details



FACILITATION

In-person facilitation is experiential and practical, based on industry research and coaching expertise.

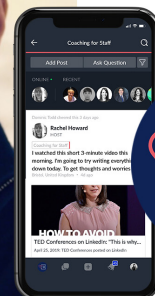
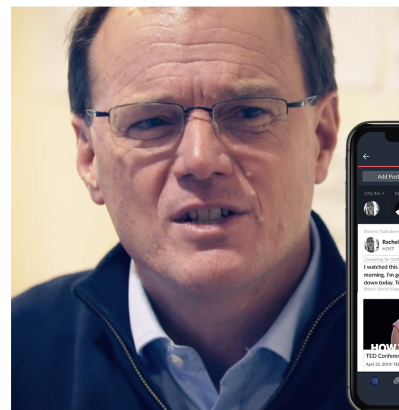


RESOURCES

A worksheet pack supports your learning during the course, and a handbook provides a comprehensive resource afterwards.

POST-COURSE SUPPORT

Following the course, you'll have the opportunity to receive two one-to-one training sessions with a Graydin Trainer. You'll improve your facilitation skills and be able to deliver coaching courses in-house. Your access to our online communities will expand.



To learn more about bringing coaching into your school, contact us at office@graydin.com or visit our website at graydin.com